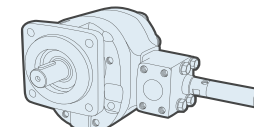
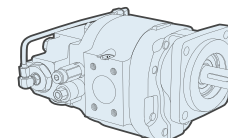
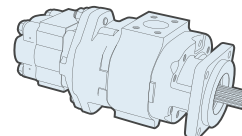
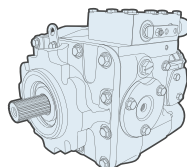
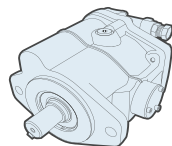
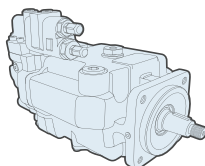
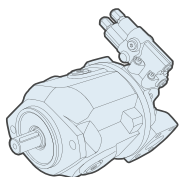


# GENUINE METARIS® REPLACEMENT PRODUCTS



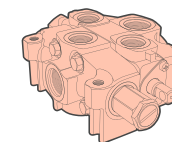
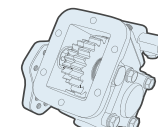
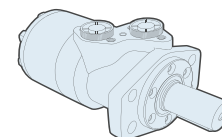
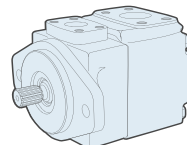
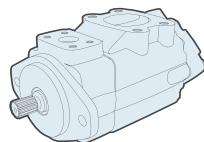
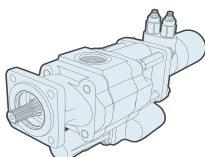
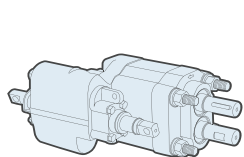
## PUMPS & MOTORS



MA10VO SERIES PISTON PUMPS	MPVH SERIES PISTON PUMPS	MHPVB SERIES PISTON PUMPS	20 SERIES PISTON PUMPS	MHP/M SERIES GEAR PUMPS	MHUP SERIES UNLOADER PUMPS	MDV SERIES DRY VALVE PUMPS
<ul style="list-style-type: none"> <li>Displacements from 18cm<sup>3</sup>-140cm<sup>3</sup></li> <li>31 &amp; 52 series designs available</li> <li>Single &amp; through-drive shaft models</li> <li>Direct Replacements for Rexroth® A10VO series</li> </ul>	<ul style="list-style-type: none"> <li>Displacements from 57cm<sup>3</sup>-131cm<sup>3</sup></li> <li>Single pumps &amp; through-drive pumps available</li> <li>Interchangeable with Vickers® PVH series (replaces the obsolete PVE series)</li> </ul>	<ul style="list-style-type: none"> <li>Displacements from 10.5cm<sup>3</sup>-61.7cm<sup>3</sup></li> <li>Single &amp; through-drive pumps available</li> <li>Interchangeable with Vickers® PVB series</li> </ul>	<ul style="list-style-type: none"> <li>8 different frame sizes</li> <li>Multiple displacements available</li> <li>Pumps &amp; motors available for a variety of applications</li> <li>Direct replacements for Sauer-Sundstrand® 20 series</li> </ul>	<ul style="list-style-type: none"> <li>Displacements from 10.2cm<sup>3</sup>-201cm<sup>3</sup></li> <li>Multi-section units, piggyback designs &amp; flow dividers available</li> <li>Interchange with Commercial®/Parker® and Muncie® gear pumps</li> </ul>	<ul style="list-style-type: none"> <li>Displacements from 102cm<sup>3</sup>-151cm<sup>3</sup></li> <li>Can be operated from cab of vehicle</li> <li>Can be retrofitted onto existing packers without major changes</li> </ul>	<ul style="list-style-type: none"> <li>Displacements from 73cm<sup>3</sup>-151cm<sup>3</sup></li> <li>7 different gear sizes available</li> <li>Available in our MH51 &amp; MH76 series</li> <li>Can reduce fuel costs and operator fatigue</li> </ul>

## PTOS

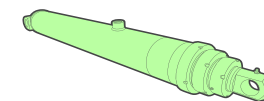
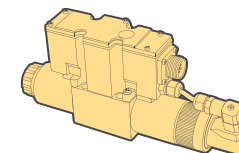
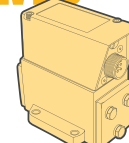
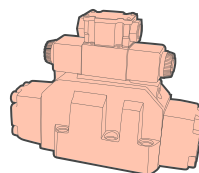
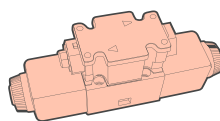
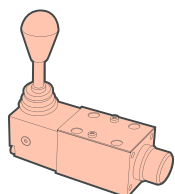
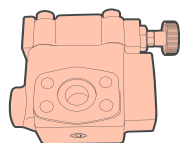
## VALVES



MH SERIES DUMP PUMPS	MHWFD SERIES DUMP PUMPS	MV/MVQ SERIES VANE PUMPS	MT SERIES VANE PUMPS / MOTORS	MM SERIES ORBITAL MOTORS	MH/MHD SERIES PTOs	MHDV SERIES VALVES
<ul style="list-style-type: none"> <li>Remote mount and direct mount options in C &amp; G frames</li> <li>Equipped with high pressure shaft seals</li> <li>Two or three line hook-up</li> <li>Optional airshift control available</li> </ul>	<ul style="list-style-type: none"> <li>Equipped with two relief pressures: high pressure (3000 psi) for Live Floor applications and low pressure (2000 psi) for dump applications</li> <li>Selectable by supplied air switch</li> </ul>	<ul style="list-style-type: none"> <li>Multiple displacement options</li> <li>Variety of shaft and porting options</li> <li>Single, double &amp; through-drive pumps available</li> <li>Interchange with Vickers® V &amp; VQ, V10, V20 &amp; VTM series</li> </ul>	<ul style="list-style-type: none"> <li>Multiple displacement options</li> <li>Single, double, triple &amp; drive-train options available</li> <li>Pump &amp; motor options</li> <li>Interchange with Parker®/Denison® T6, T7 &amp; M4 series components</li> </ul>	<ul style="list-style-type: none"> <li>Displacements from 50cm<sup>3</sup>-1,250cm<sup>3</sup></li> <li>Roller Star technology</li> <li>Fit and function replacements for Char-Lynn®, Danfoss®, Parker®, White®, etc.</li> </ul>	<ul style="list-style-type: none"> <li>Available in 6-bolt &amp; 8-bolt</li> <li>Standard and Heavy Duty options</li> <li>Compatible with a variety of transmission manufacturers</li> <li>Fit and function replacements for Muncie®, Chelsea® &amp; Bezares®</li> </ul>	<ul style="list-style-type: none"> <li>Stackable or sectional design directional control valves</li> <li>Built-in, full flow relief valves</li> <li>Large variety of options</li> <li>Interchange options for Parker® DVA/G, VA/G &amp; Muncie® 60V</li> </ul>

## SERVO/PROPORTIONAL VALVES

## CYLINDERS



PRESSURE/FLOW CONTROL VALVES	DG17/4WM SERIES VALVES	DG4/4WE SINGLE STAGE VALVES	DG5/4WE 2 STAGE VALVES	METARIS 62 SERIES VALVES	METARIS 4WREE6 SERIES VALVES	MH SERIES TELESCOPIC CYLINDERS
<ul style="list-style-type: none"> <li>Pressures up to 5,000 psi (350 bar)</li> <li>Flow from 5 g/min to 158.5 g/min</li> <li>Standardized mounting options</li> <li>Replacements for Denison® R4, R5 series &amp; Vickers® CT, URG, FCG, RCT, RT</li> </ul>	<ul style="list-style-type: none"> <li>Pressures up to 3,000 psi (210 bar)</li> <li>Flow from 20 g/min to 100 g/min</li> <li>Porting pattern: D03, D05, D08 &amp; NG25</li> <li>Replacements for Vickers® DG17 &amp; Rexroth® 4WM</li> </ul>	<ul style="list-style-type: none"> <li>Pressures up to 5,000 psi (350 bar)</li> <li>Flow from 10.5 g/min to 31 g/min</li> <li>Porting pattern: D03, D05 &amp; NG6</li> <li>Replacement for Vickers® DG4V-3, DG4S4 &amp; Rexroth® 4WE6</li> </ul>	<ul style="list-style-type: none"> <li>Pressures up to 3,000 psi (210 bar)</li> <li>Flow from 42 g/min to 110 g/min</li> <li>Porting pattern: D05 to D10 or NG10 to NG32</li> <li>Replacement for Vickers® DG5*, Rexroth® 4WEH10, 4WE16, 25, 32</li> </ul>	<ul style="list-style-type: none"> <li>Flow Control Servo Valve</li> <li>Pressures up to 3,000 psi (210 bar)</li> <li>Flow from 2.5 g/min to 20 g/min</li> <li>Mounting: ISO 10372-04-04-0-92</li> <li>Replacement for Moog® 62 series servo valve</li> </ul>	<ul style="list-style-type: none"> <li>Proportional Directional Valve</li> <li>Pressures up to 4,500 psi (315 bar)</li> <li>DIN EN 175201-804 connector</li> <li>Mounting: D03/NG6</li> <li>Replacement for Rexroth® 4WREE6 series</li> </ul>	<ul style="list-style-type: none"> <li>Single acting cylinders</li> <li>Pin mount and trunnion mount options available in 3, 4 &amp; 5 stage</li> <li>All stages chrome plated</li> <li>Crossovers available for Hyco®, Parker® &amp; Custom Hoist®</li> </ul>

HYDRAULEX DETROIT

Tel: 586.949.4240

sales@hydraulex.com

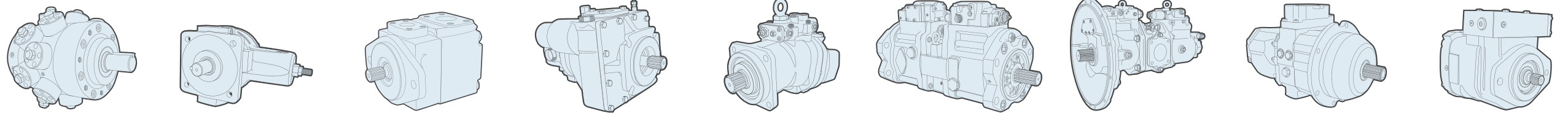
HYDRAULEX MEMPHIS

Tel: 901.794.2462

memphisales@hydraulex.com

# WE'VE GOT YOU COVERED

## PUMPS & MOTORS



BOSCH®/RACINE®	CONTINENTAL®	DENISON®	EATON®	HITACHI®	KAWASAKI®	KOMATSU®	LINDE®	OILGEAR®
RPV	HPV, PVR	M4, T6, T7	Series 1, 2 & 3, Models 33, 39, 46, 54, 64, 76	HPV	K3V, K3VL, K3SP, K5V, K7V, NV	HPV	BMF, BMR, BMV, BPR, BPV	PVWH, PVWJ, PVWW, PVG, PVM, PVK
PSQ, VPV, PSV	PVX	P6, P7, M6, M7, M8, P14, M14	Cessna	HMGC, HMGF	MB, MX, M2X, M3X, M5X		HMF, HMR, HMV, HPR, HPV	D, C
PVF, PVK, PVQ, PVS, PVT								

## PRODUCT LINE OVERVIEW /

### HOW TO USE

Each component manufacturer listed has with it a list of unit series that we commonly stock and/or support. Following the manufacturer name, you'll see a few icons and colored dots.

### THE ICONS

Here's what each icon means:

- ★ Units Stocked/Available
- ⚙️ Parts Stocked/Available
- 🔧 Repair Services Available

### LOCATION SUPPORT

Each colored dot signifies what location to contact for that specific series of unit.

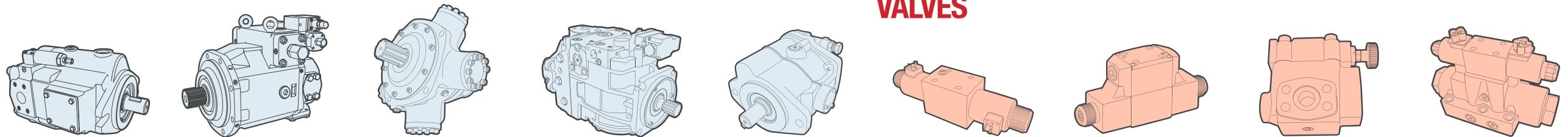
**HYDRAULEX DETROIT**  
Tel: 586.949.4240  
sales@hydraulex.com

**HYDRAULEX MEMPHIS**  
Tel: 901.794.2462  
fhisales@hydraulex.com

**HYDRAULEX SEATTLE**  
Tel: 253.604.0400  
hrdsales@hydraulex.com

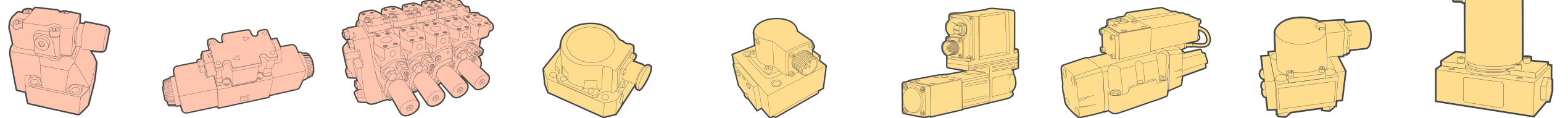
Don't see what you're looking for? These are simply our commonly stocked and supported items. Please contact us as we still might stock or be able to source what you are looking for.

## VALVES



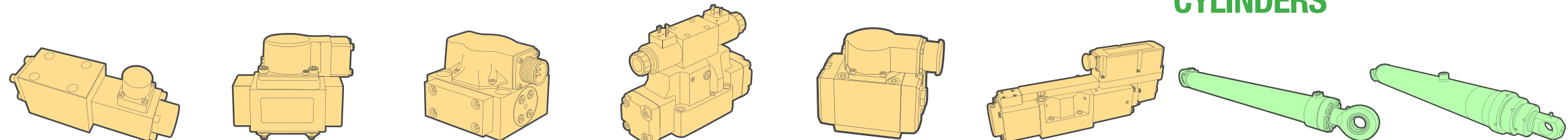
PARKER®	REXROTH®/UCHIDA®	STAFFA®	SUNDSTRAND®	VICKERS®	BOSCH®/RACINE®	CONTINENTAL®	DENISON®	PARKER®
PAVC, PVP, PVV	AA2F, A2FO, A2FM	HMB	Series 15, 18	V10/V20, VQ, VHO, VMQ	081WV	VS	R4, R5	V1, VW, V3W
F11, F12, MF	A4F, A4V, A6V, A7V, A8V		Series 20 - 27	35/45/50M	FD4, FB1, FF2		2F1C	PR
	A10V, A11V		Series 40, 44, 45, 51V, L, Series 90, H1	MHT Series, MVE, TB				
	V3, V4, V5, V6, V7			PVB, PVH, PVE, PVQ, PVM, TA, PVA				

## SERVO & PROPORTIONAL VALVES



REXROTH®	VICKERS®	MAIN CNTRL VALVES	ABEX®	ATCHLEY®	ATOS®	BOSCH®/REXROTH®	DYVAL®	HR TEXTRON®
4WE	DG4, DG5	Mobile Equipment Main Control Valves	410, 415, 425, 450	21*, 22*, 231, 24*, 261	RZ*, AG*, DH*, DP*, DL*	3DS, 4WR, 4WS, 3D, 3F, 3W, 5WR	DY5, DY10, DY12, DY45	27*50
DB, 2FRM	CG, CGE, CS, CT, URG					DB, FE, STW, Z4, ZBR, ZDR		
	FN, DGFN, FCG							

## CYLINDERS



HYDROLUX®	MOOG®	MTS®	PARKER®	SCHENCK PEGASUS®	VICKERS®	CYLINDERS	TELESCOPIC CYLS
SE4, WEP, WSH	3", 60", 6", 7", A076, D*, E050	25*	15, 20, 50, 200, 1000, BD	15, 12", 13", 14", 16", 18", 128", 20"	SA4, SC4, SH4, SM4, SP4	Earth Moving, Marine, Press, Crane	3-Stage, 4-Stage, 5-Stage, etc.
	64", 65", 66", 68", D6		3D, D1, D3, D4, D8, D9, PH76, RE06, SE20, TD		EHST, KA, KB, KC, KD, KF, KH, KS, KT	Excavator, Chip Dump, Mining	HYCO® Cylinders

**HYDRAULEX REMAN**

REMANUFACTURED IN THE USA

24 MONTH LIMITED WARRANTY